

Protection against renal ischaemia/reperfusion injury: A comparative experimental study of the effect of ischaemic preconditioning vs. postconditioning

Ahmed A. Shokeir, Abdelaziz M. Hussein, Amira Awadalla, Ahmed Samy, Azza Abdelaziz, Sheiri Khater & Nashwa Barakat

To cite this article: Ahmed A. Shokeir, Abdelaziz M. Hussein, Amira Awadalla, Ahmed Samy, Azza Abdelaziz, Sheiri Khater & Nashwa Barakat (2012) Protection against renal ischaemia/reperfusion injury: A comparative experimental study of the effect of ischaemic preconditioning vs. postconditioning, Arab Journal of Urology, 10:4, 418-424, DOI: [10.1016/j.aju.2012.08.003](https://doi.org/10.1016/j.aju.2012.08.003)

To link to this article: <https://doi.org/10.1016/j.aju.2012.08.003>



© 2012 Arab Association of Urology



Published online: 05 Apr 2019.



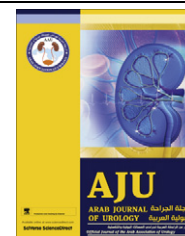
Submit your article to this journal [↗](#)



Article views: 205



View related articles [↗](#)



UROSCIENCE

ORIGINAL ARTICLE

Protection against renal ischaemia/reperfusion injury: A comparative experimental study of the effect of ischaemic preconditioning vs. postconditioning

Ahmed A. Shokeir ^a, Abdelaziz M. Hussein ^{b,*}, Amira Awadalla ^a, Ahmed Samy ^a,
Azza Abdelaziz ^c, Sheiri Khater ^a, Nashwa Barakat ^a

^a Urology and Nephrology Center, Faculty of Medicine, Mansoura University, Mansoura, Egypt

^b Physiology Department, Faculty of Medicine, Mansoura University, Mansoura, Egypt

^c Pathology Department, Faculty of Medicine, Mansoura University, Mansoura, Egypt

Received 22 June 2012, Received in revised form 28 July 2012, Accepted 15 August 2012

Available online 18 October 2012

KEYWORDS

Preconditioning;
Postconditioning;
Ischaemia/reperfusion;
Rat;
Oxidative stress

ABBREVIATIONS

Ipre, ischaemic pre-
conditioning; Ipost,
ischaemic postcondi-
tioning; I/R, ischaem-
ia/reperfusion; BUN,
blood urea nitrogen;

Abstract Objective: To compare the effect of ischaemic preconditioning (Ipre) vs. ischaemic postconditioning (Ipost) on renal ischaemia/reperfusion (I/R) injury in rats.

Materials and methods: In all, 120 male Sprague–Dawley rats were classified into four groups of 30 rats each, designated sham, control, Ipre and Ipost. Renal function, including serum creatinine, blood urea nitrogen (BUN), creatinine clearance (CrCl), fractional Na excretion (FENa) and renal histopathology were measured at 2, 24 and 48 h after ischaemia. Markers of lipid peroxidation (malondialdehyde, MDA), superoxide dismutase (SOD) and reduced glutathione (GSH) were measured in kidney tissues during the same intervals.

Results: Ipre caused a significant improvement in renal function, as indicated by a significant decrease in serum creatinine, BUN and FENa, with a significant increase in CrCl. However, Ipost caused no significant improvement in renal function. Morphologically Ipre caused a marked significant improvement in the renal tubular

* Corresponding author. Mobile: +20 1002421140; fax: +20 502263717.

E-mail address: zizomenna@yahoo.com (A.M. Hussein).

Peer review under responsibility of Arab Association of Urology.



Production and hosting by Elsevier

CrCl, creatinine clearance; FENa, fractional Na excretion; MDA, malondialdehyde; SOD, superoxide dismutase; GSH, reduced glutathione; ROS, reactive oxygen species; H&E, haematoxylin and eosin; OSOM, outer stripe of the outer medulla

damage score compared to Ipost. Also, Ipre caused a significant decrease in MDA, and significant increase in GSH and SOD when compared to Ipost.

Conclusion: Ipre is more potent than Ipost for improving the renal injury induced by I/R. Ipre caused a marked improvement in renal function and morphology, while Ipost caused a minimal improvement in morphology only. Moreover, Ipre caused a marked and significant reduction in oxidative stress in kidney tissues, while Ipost caused a minimal reduction.

© 2012 Arab Association of Urology. Production and hosting by Elsevier B.V. All rights reserved.

Introduction

Renal ischaemia/reperfusion (I/R) injury is a common cause of acute renal failure and contributes to considerable morbidity associated with surgery and anaesthesia [1,2]. Although several decades of research have greatly improved the understanding of the mechanisms underlying renal I/R injury, effective drugs for treating it are still unavailable. Therefore, it is necessary to actively explore other approaches for this problem. Ischaemic preconditioning (Ipre), a well-established phenomenon that describes tissue adaptation to stress by exploiting intrinsic defence mechanisms, was initially described in the heart by Murry et al. [3] and Ambros et al. [4]. Ipre consists of transient periods of non-lethal ischaemia before a subsequent lethal episode of ischaemia. In 2003, Zhao et al. [5], introduced the concept of ischaemic post-conditioning (Ipost), which consists of one or more short cycles of reperfusion followed by one or more short cycles of ischaemia, immediately after an ischaemic phase and before the permanent reperfusion.

The efficacy of the protective effect of Ipre and Ipost is variable. In the heart, some studies showed no statistically significant difference in the reduction of infarct size for Ipre and Ipost [5], while other studies showed Ipre to be more effective than Ipost [6]. The differences between the efficacy of these cardioprotective methods might suggest differing underlying protective mechanisms. In the small intestine, dos Santos et al. [7] recently concluded that Ipre and Ipost were equally able to minimise the tissue injury in the intestines of rats subjected to mesenteric ischaemia and reperfusion. In the kidney, several studies reported the beneficial effect of Ipre [8–11] and Ipost [12,13] on renal I/R injury in different species of animal. Nevertheless, to the best of our knowledge, no study has been designed to compare the magnitude of the renoprotective effects of Ipre and Ipost against renal I/R injury. Thus the aim of the present study was to compare the efficacy of Ipre and Ipost in protecting against renal I/R injury in a rat model, for both renal function and renal morphology, and to compare their effects on the redox state in kidney tissue.

Materials and methods

The study included 120 male Sprague–Dawley rats (body weight 200–250 g, 4–6 months old) that were bred in the animal research facility in the Urology & Nephrology Centre at Mansoura, Egypt. Experiments were performed according to the Guide for the Care and Use of Laboratory Animals (Institute for Laboratory Animal Research, National Research Council, Washington, DC: National Academy Press, No. 85–23, revised 1996). All protocols were approved by our ethical committee of Mansoura, Faculty of Medicine.

Study design

The rats were randomly divided into four equal groups: (1) sham, where rats were subjected to right nephrectomy and exposure of the left renal pedicle with no ischaemia; (2) controls, subjected to right nephrectomy and left renal ischaemia for 45 min (definitive ischaemia); (3) Ipre, treated as the control group, but preconditioning ischaemia was induced before the definitive ischaemia; (4) Ipost, treated as the control group, but Ipost was induced after the definitive ischaemia. Each group was subdivided into three subgroups each contains 10 rats, that were killed humanely at 2, 24 and 48 h, respectively, according to the designated subgroup, and the kidneys harvested. Blood and urine samples were collected just before the death. Urine could not be collected at the 2-h sample time.

Experimental model

For the sham operation the rats were anaesthetised with a mixture of ketamine 75 mg/kg and diazepam 5 mg/kg intraperitoneally. After inducing anaesthesia a midline laparotomy was made, then a right nephrectomy was done and the left kidney and its pedicle were dissected off the surrounding perirenal fat along the renal surface. The left kidney was exposed for 45 min with no vascular clamping. The abdomen was then irrigated with isotonic saline and the abdominal incision closed by continuous suture using polyglactin 2/0.

The control group was treated as the sham group but the left renal artery was clamped using a vascular clip for 45 min and the right nephrectomy was done 5 min before removing the vascular clamp.

The Ipre group was also treated like the control group, but three cycles of 2 min of ischaemia, followed by a 5-min reperfusion period for I/R, were applied before the 45 min of ischaemia [4].

The Ipost group was also treated like the control group, but 3, 6 and 12 min of reperfusion were applied consecutively, separated by 5 min of re-occlusion, after 45 min of ischaemia [14].

Assessment of renal function

Serum creatinine and blood urea nitrogen levels (BUN) were estimated from blood samples. Endogenous creatinine clearance (CrCl), and fractional Na excretion (FENa⁺) were calculated as, respectively;

(urine creatinine, mg/dL

$$\times \text{urine volume, mL/24 h}) / (\text{serum creatinine, mg/dL} \\ \times 1440 \text{ min})$$

and

(serum creatinine, mg/dL

$$\times \text{urinary sodium, mmol/L}) / (\text{serum sodium, mmol/L} \\ \times \text{urinary creatinine, mg/dL}) \times 100$$

Renal oxidative stress after IR injury was determined by measuring renal cortical malondialdehyde (MDA, an index for lipid peroxidation) and superoxide dismutase (SOD, an endogenous antioxidant enzyme).

Histopathological examination

Explanted kidneys were bisected along the long axis and were fixed in 10% formalin solution for 24 h. After automated dehydration through a graded-alcohol series, transverse kidney slices were embedded in paraffin, sectioned at 4 µm, and stained with haematoxylin and eosin (H&E). For the histopathological assessment of ischaemic tubular injury we used a modified form of well-established grading scales (scores of 0–4) [15]. The numerical score used was as follows: 0, no damage; (1) unicellular patchy isolated necrosis; (2) tubular necrosis < 25%; (3) tubular necrosis 25–50%; and (4) > 50% tubular necrosis.

One-way anova was used to assess the significance within treated groups, within Scheffe's posthoc test, and $P < 0.05$ was taken to indicate statistical significance.

Results

In basal conditions all the groups had comparable values for all the variables of renal function. CrCl and

FENa were not calculated at 2 h after ischaemia because urine could not be collected at that time. Compared to the sham group, the control and study groups had a significant increase in serum creatinine, BUN and FENa, and a significant decrease in CrCl at all sample times ($P < 0.05$). Nevertheless, the percentage change in the Ipre group was significantly less than in the Ipost group. Compared to the control group, the Ipost group had no significant change at all sample times, but the Ipre group had significant decreases in serum creatinine, BUN and FENa, and a significant increase in CrCl at 24 and 48 h after ischaemia ($P < 0.05$; Table 1).

Oxidative stress

Compared to the sham group the control group had a significant increase in MDA and a significant decrease in GSH and SOD. Compared to control group the study groups had a significant decrease in lipid peroxide (MDA) concentration ($P < 0.05$). Nevertheless, these changes were more significant in the Ipre than the Ipost group. Also, compared to control group, the study groups had significant increases in the concentration of SOD and GSH ($P < 0.05$). These changes in concentrations were more significant in the Ipre than the Ipost group (Table 2).

Renal morphology

Kidneys from the control rats showed a significant increase in tubular injury score (scores 3, 4) when compared with that of sham rats ($P < 0.05$; Fig. 1). The kidney sections from the sham group showed the normal preserved kidney structure (Fig. 2A). For the control group, the most severe and pronounced injury was in the cortex and the outer stripe of the outer medulla (OSOM), with a pattern of acute tubular necrosis, which included widespread degeneration of the tubular architecture, detachment of epithelial cells from the basement membrane, tubular cell necrosis, intratubular cast formation and luminal congestion with extensive loss of the brush border (Fig. 2B). Renal sections from the Ipre group showed a marked reduction in the histological features of renal injury (Fig. 3A and B), consisting of mild individual tubular necrosis and minimal tubular dilatation (scores 1, 2, of which 17 rats had score 1 and 13 had score 2) when compared with the control group in the same period ($P < 0.05$). However, in the Ipost group there were no significant changes (Fig. 4A and B) compared with the control group.

Discussion

Ipre and Ipost are simple methods to render an organ more tolerant to ischaemia [4,16]. Also, the critical role of reactive oxygen species (ROS) in I/R-mediated renal

Table 1 The effect of Ipre and Ipost on the variables of renal function, from 10 rats at each sample time.

Group	Mean (SD) variable at sample time (h)					
	2		24		48	
	Basal	Test	Basal	Test	Basal	Test
<i>Serum creatinine (mg/dL)</i>						
Sham	0.44 (0.09)	0.50 (0.14)	0.45 (0.11)	0.58 (0.05)	0.47 (0.07)	0.62 (0.09)
Control	0.52 (0.12)	0.81 (0.09)*	0.45 (0.09)	2.08 (0.46)*	0.61 (0.06)	1.38 (0.14)*
Ipre	0.44 (0.09)	0.85 (0.19)*	0.46 (0.08)	1.20 (0.26)*†	0.52 (0.09)	0.85 (0.11)*†
Ipost	0.48 (0.08)	0.69 (0.16)‡	0.44 (0.11)	1.64 (0.45)*‡	0.50 (0.09)	1.14 (0.29)*‡
<i>Serum BUN (mg/dL)</i>						
Sham	21.10 (2.02)	25.80 (1.23)	19.10 (3.02)	25.10 (2.80)	21.10 (2.02)	20.40 (2.71)
Control	21.40 (3.75)	37.10 (3.14)*	19.50 (3.02)	49.80 (3.55)*	19.00 (2.71)	42.70 (6.17)*
Ipre	18.00 (2.67)	28.40 (3.13)†	20.10 (2.73)	29.00 (3.43)†	19.60 (3.20)	26.40 (2.79)†
Ipost	20.10 (2.42)	34.90 (3.98)‡	19.70 (3.34)	48.50 (6.43)*‡	20.60 (3.75)	39.30 (5.06)*‡
<i>CrCl (mL/min)</i>						
Sham	1.36 (0.37)	–	1.33 (0.24)	1.23 (0.42)	1.41 (0.21)	1.31 (0.29)
Control	1.56 (0.48)	–	1.34 (0.28)	0.11 (0.03)*	1.36 (0.37)	0.24 (0.05)*
Ipre	1.60 (0.26)	–	1.34 (0.51)	0.42 (0.12)†	1.42 (0.27)	1.100 (0.26)*†
Ipost	1.81 (0.49)	–	1.68 (0.36)	0.19 (0.01)*‡	1.76 (0.32)	0.25 (0.08)*‡
<i>FENa (%)</i>						
Sham	0.25 (0.07)	–	0.27 (0.04)	0.41 (0.09)	0.31 (0.06)	0.35 (0.05)
Control	0.28 (0.09)	–	0.34 (0.06)	0.97 (0.14)*	0.35 (0.07)	0.93 (0.19)*
Ipre	0.28 (0.04)	–	0.35 (0.08)	0.44 (0.11)†	0.26 (0.05)	0.34 (0.05)†
Ipost	0.29 (0.07)	–	0.27 (0.08)	0.88 (0.69)*‡	0.25 (0.05)	0.56 (0.21)*,‡†

One-way anova with posthoc Scheffe's test.

* significant ($P = 0.05$) from the sham group.

† significant ($P = 0.05$) from the control group.

‡ significant ($P = 0.05$) from the Ipre group.

Table 2 The effect of Ipre and Ipost on lipid peroxidation products (MDA), and the antioxidants SOD and GSH.

Mean (SD) variable at sample time (h)	Sham	Control	Ipre	Ipost
<i>MDA (nmol/g tissue)</i>				
2	14.35 (3.48)	334.35 (23.78)*	167.39 (12.36) †	190.23 (12.32) †‡
24	21.52 (1.27)	364.57 (18.24)*	125.48 (11.97) †	167.25 (12.37) †‡
48	26.22 (2.22)	262.42 (20.29)*	62.42 (8.37) †	97.05 (10.02) †‡
<i>SOD (% of inhibition)</i>				
2	97.25 (8.37)	77.78 (7.27)*	84.44 (5.09) †	90.00 (8.47) †‡
24	90.45 (3.36)	76.32 (13.26)*	86.67 (12.56) †	47.78 (11.29) †‡
48	93.33 (6.80)	33.33 (9.50)*	65.56 (10.31) †	63.33 (9.07) †‡
<i>GSH (mg/g tissue)</i>				
2	212.10 (10.27)	85.30 (11.37)*	168.93 (10.34) †	135.25 (13.06) †‡
24	210.21 (8.75)	110.31 (13.25)*	349.94 (21.46) †	225.49 (18.67) †‡
48	200.59 (16.18)	130.43 (10.08)*	535.83 (26.67) †	275.39 (21.01) †‡

One-way anova with posthoc Scheffe's test.

* Significant ($P = 0.05$) from the sham group.

† Significant ($P = 0.05$) from the control group.

‡ Significant ($P = 0.05$) from the Ipre group.

injury has been shown by many studies [17–19] and a reduction of oxidative stress might be one of the potential mechanisms of the renoprotective effect of Ipre and Ipost on renal I/R injury. Thus, in the present study, we compared the effect of Ipre and Ipost on renal function and morphology, and on oxidative stress in renal I/R injury. Ipre significantly improved renal function at the tubular and glomerular levels, as indicated by a significant increase in CrCl, and significant decreases in serum

BUN, creatinine and FENa in the Ipre compared with the control group at 2, 24 and 48 h after renal ischaemia. These findings are in agreement with those from previous studies [20,21]. Unfortunately, Ipost caused no significant improvement in renal function at 2, 24 and 48 h after renal ischaemia. These findings are consistent with those reported by Zhuang et al. [22] and not in line with those of Szwarc et al. [12], who reported that Ipost caused a significant improvement in renal function after

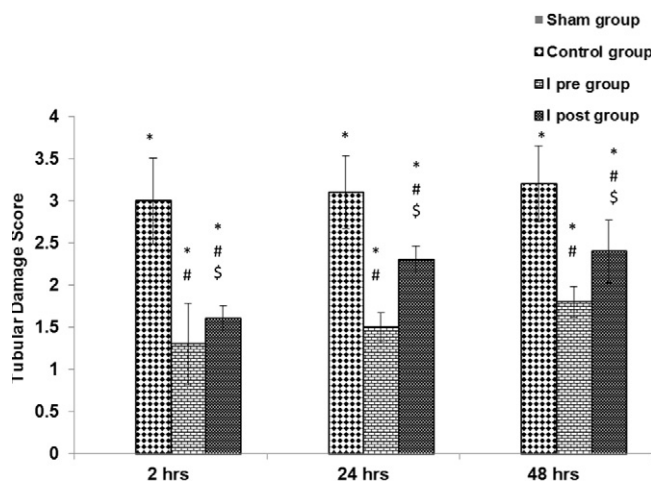


Figure 1 The effects of Ipre and Ipost on the tubulo-interstitial damage score at 2, 24 and 48 h after ischaemia in the different groups. Significant difference from the *sham group, #control group, and \$significant from the Ipre group. One-way anova with Scheffe's posthoc test ($P < 0.05$).

renal I/R injury. Moreover, in a recent study, Weng et al. [23] reported that Ipost inhibited tubulointerstitial fibrosis after renal ischaemia. They used a rat model of 45-min of ischaemia and reperfusion for 12 weeks. The present findings suggest that Ipre is more effective than Ipost in renal protection from I/R injury.

It was reported that not all combinations and durations of ischaemia and reperfusion trigger the preconditioning phenomenon to protect the kidney from I/R injury [10]. Previous studies indicated that left renal artery occlusion for four cycles of ischaemia for 4 min with a 12-min reperfusion, or Ipre with four cycles of renal ischaemia for 8 min with a 5-min reperfusion, or bilateral renal pedicle occlusion for three cycles of ischaemia

for 5 min followed by 5 min of re-flow, protected renal function and improved renal morphology after subsequent severe I/R injury [7–9]. In the present study the findings were similar, although we used three cycles of 2 min of ischaemia and 5 min of reperfusion. Also, Torras et al. [10] and Jia et al. [11] reported that one cycle of 15 min of ischaemia and 10 min of reperfusion was the optimum Ipre schedule for a renal isograft.

Renal I/R injury is a complex inflammatory process characterised by tubular epithelial cell necrosis and apoptosis, marked monocyte infiltration, and increased production ROS. The latter act as a key mediator in the renal injury induced by I/R, and cellular defence mechanisms against oxidative stress are necessary to maintain normal cellular function. In the present study there was a lower concentration of GSH and SOD in the control group that was enhanced by Ipre. Also, the level of MDA (a marker of lipid peroxidation) increased significantly in kidney tissues after renal I/R, and Ipre reversed the increase in lipid hydroperoxide levels to a considerable extent. These findings suggest that an attenuation of oxidative stress in the kidney might be one of the potential protective mechanisms of Ipre.

Although previous studies reported that Ipost provides a renoprotective effect on I/R-induced renal injury in rat and mice [13], we failed to detect any protective effect of Ipost on I/R injury in this rat model, at the least at the level of renal function, which showed no significant improvement in the Ipost group when compared to the controls. Nevertheless, the Ipost group showed a significant improvement in renal tubular damage score. Consistent with the present study, the ineffectiveness of Ipost was also reported by Zhuang et al. [22], but they did not report improvement at the level of renal function and morphology, and the present study failed to detect any improvement in renal function only. In

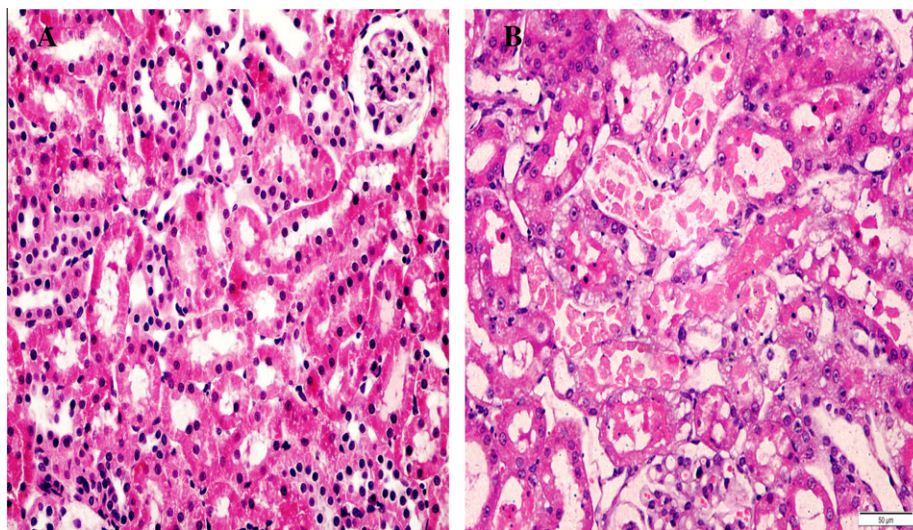


Figure 2 Sections of the kidney from the sham group (A), showing a normal appearance of glomeruli and tubules (score 0), and the control group (B), showing tubular necrosis at OSOM in > 50% of tubules, score 4. H&E $\times 400$.

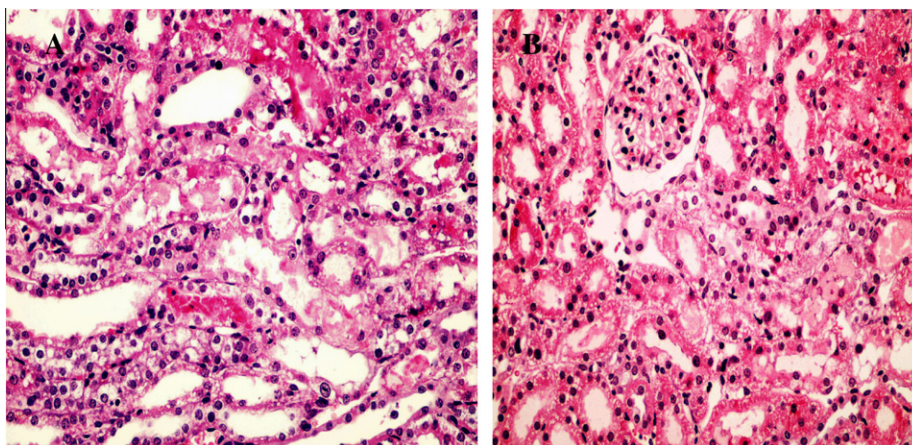


Figure 3 Sections from kidneys of the Ipre group at 24 h (A), showing tubular necrosis at OSOM in $\approx 35\%$ of tubules, score 3 (H&E $\times 400$); and the Ipre group at 48 h (B) showing tubular necrosis at OSOM in $> 10\%$ of tubules, score 2 (H&E $\times 400$).

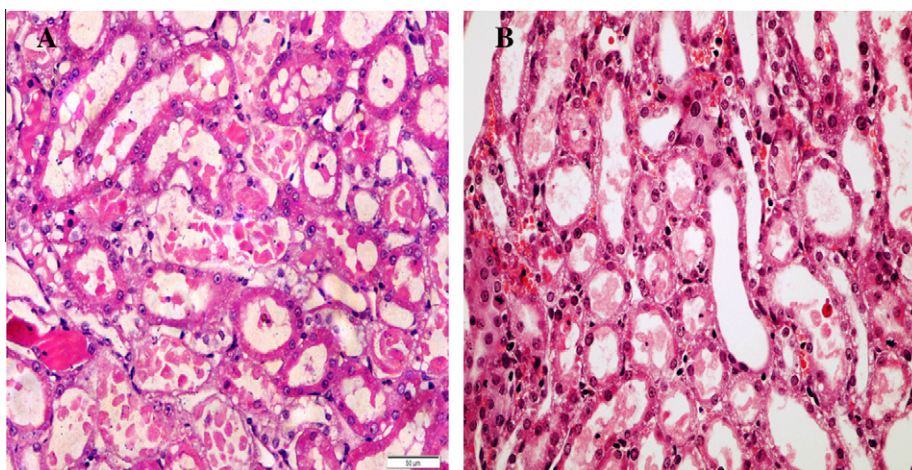


Figure 4 Sections from kidneys of the Ipost group at 24 h (A), showing tubular necrosis at OSOM in $\approx 70\%$ of tubules, score 4 (H&E $\times 400$), and in the Ipost group at 48 h (B) showing tubular necrosis at OSOM in $\approx 60\%$ of tubules, score 4 (H&E $\times 400$).

cardiac muscle, Schwartz et al. [24] showed that 30-s cycles of repetitive ischaemia during reperfusion has no protective effect on pig hearts subjected to lethal ischaemia. Also, Dow et al. [25] showed that Ipost does not reduce myocardial infarct size in an *in vivo* regional-ischaemia rodent model.

The discrepancy in the effectiveness of Ipost on renal I/R injury between the present and previous studies remains unknown, but it might be due to differences in the duration of ischaemia and of Ipost in these studies. In the present model the ischaemia time was 45 min and cycles of Ipost were three of 5 min of ischaemia separated by 3, 6 and 12 min of reperfusion, so the total ischaemia time was 60 min. However, in the study of Szwarc et al. [13] it was 30 min followed by three cycles of 30 s of ischaemia separated by 30 s of reperfusion. Also, Zhuang et al. [22] showed in mice that left renal ischaemia for 26 min followed by 30 s of ischaemia separated by 30 s of reperfusion did not improve the renal

injury induced by I/R. Also, in the present study, the Ipost showed a significant decrease in oxidative stress, as indicated by a significant decrease in MDA, and significant increases in SOD and GSH in the Ipost group when compared to controls. However, the effect of Ipost was less significant than for Ipre. Hence the protective effect of Ipost might be due to a reduction in oxidative stress.

The present study, to the best of our knowledge, is the first to compare the effect of Ipre and Ipost on renal I/R injury. However, the study has some limitations, e.g., the mechanisms to explain the renoprotective effects of Ipost and Ipre are insufficient. Further studies are needed to resolve the controversy in Ipost results in the present and previous studies. We recommend studying the effect of Ipre and Ipost on the activation and expression of antioxidant genes, such as *Nrf2*, and on inflammatory cytokines and the apoptotic process.

In conclusion, Ipre ameliorated the renal injury induced by renal I/R, while Ipost was associated with no significant improvements in renal function. However, both treatments attenuated the tubular damage score and oxidative stress in kidney tissues, but the effect of Ipre was more potent than Ipost. Further studies are needed to understand the underlying mechanisms of these effects.

Conflict of interest

None.

Source of Funding

This work was funded through the Science and Technology Development Fund (STDF), Egypt-grant no. 1146.

References

- [1] Chander V, Chopra K. Protective effect of nitric oxide pathway in resveratrol renal ischemia-reperfusion injury in rats. *Arch Med Res* 2006;**37**:19–26.
- [2] Aronson S, Blumenthal R. Preoperative renal dysfunction and cardiovascular anaesthesia: concerns and controversies. *J Cardiothorac Vasc Anesth* 1998;**17**:117–30.
- [3] Murry CE, Jennings RB, Reimer KA. Preconditioning with ischemia. A delay of lethal cell injury of lethal cell injury in ischemic myocardium. *Circulation* 1986;**74**:1124–36.
- [4] Ambros JT, Herrero-Fresneda I, Borau OG, Boira JM. Ischemic preconditioning in solid organ transplantation: from experimental to clinics. *Transplant Int* 2007;**20**:219–29.
- [5] Zhao ZQ, Corvera JS, Halkos ME, Kerendi F, Wang NP, Guyton RA, et al. Inhibition of myocardial injury by ischemic preconditioning during reperfusion comparison with ischemic preconditioning. *Am J Physiol Heart Circ Physiol* 2003;**285**:H579–88.
- [6] Argaud L, Gateau-Roesch O, Raisky O, Loufouat J, Robert D, Ovize M. Postconditioning inhibits mitochondrial permeability transition. *Circulation* 2005;**111**:194–7.
- [7] dos Santos CH, Gomes OM, Pontes JC, Mijji LN, Bispo MA. The ischemic preconditioning and postconditioning effect on the intestinal mucosa of rats undergoing mesenteric ischemia/reperfusion procedure. *Acta Cir Bras* 2008;**23**:22–8.
- [8] Toosy N, McMorris EL, Grace PA, Mathie RT. Ischaemic preconditioning protects the rat kidney from reperfusion injury. *BJU Int* 1999;**84**:489.
- [9] Lee HT, Emala CW. Protective effects of renal ischemic preconditioning and adenosine pretreatment: role of A (1) and A (3) receptors. *Am J Physiol Renal Physiol* 2000;**278**:F380.
- [10] Torras J, Herrero-Fresneda I, Lloberas N. Promising effects of ischemic preconditioning in renal transplantation. *Kidney Int* 2002;**61**:2218–27.
- [11] Jia RP, Xie JJ, Luo FY, Zhu JG. Ischemic preconditioning improves rat kidney allograft function after ischemia/reperfusion injury role tumor necrosis factor-alpha. *Transplant Proc* 2008;**40**:3316–20.
- [12] Szwarz S, Soullier N, Gayrard N, Mejean C, Mourad G, Argiles A. Ischemic postconditioning prevents ischemic acute renal failure. *Transplant Proc* 2007;**39**:2554.
- [13] Liu X, Chen H, Zhan B, Xing B, Zhou J, Zhu H, et al. Attenuation of reperfusion injury by renal ischemic postconditioning: the role of NO. *Biochem Biophys Res Commun* 2007;**359**:628–34.
- [14] Serviddio G, Romano AD, Gesualdo L, Tamborra R, Di Palma T, Rollo T, et al. Postconditioning is an effective strategy to reduce renal ischaemia/reperfusion injury. *Nephrol Dial Transplant* 2008;**23**:1504–12.
- [15] Solez K, Kramer EC, Fox JA, Heptinstall RH. Medullary plasma flow and intravascular leukocyte accumulation in acute renal failure. *Kidney Int* 1974;**6**:24–37.
- [16] Vinten-Johansen J, Zhao ZQ, Zatta AJ, Kin H, Halkos ME, Kerendi F. Postconditioning: new link in nature's armor against myocardial ischemia-reperfusion injury. *Basic Res Cardiol* 2005;**100**:295–310.
- [17] McCord JM. Oxygen-derived free radicals in postischemic tissue injury. *N Eng J Med* 1985;**312**:159–63.
- [18] Beckman JK, Yoshioka T, Knobel SM, Greene HL. Biphasic changes in phospholipid hydroperoxide levels during renal ischemia/reperfusion. *Free Radic Biol Med* 1991;**11**:335–40.
- [19] Nitescu N, Ricksten SE, Marcussen N, Haraldsson B, Nilsson U, Basu S, et al. N-Acetylcysteine attenuates kidney injury in rats subjected to renal ischaemia-reperfusion. *Nephrol Dial Transplant* 2006;**21**:1240–7.
- [20] Hernandez DJ, Roberts WB, Miles-Thomas J, Magheli A, Saha S, Schaeffer EM, et al. Can ischemic preconditioning ameliorate renal ischemia-reperfusion injury in a single-kidney porcine model? *J Endourol* 2008;**22**:2531–6.
- [21] Timsit MO, Gadet R, Ben Abdennebi H, Codas R, Petruzzo P, et al. Renal ischemic preconditioning improves recovery of kidney function and decreases alpha-smooth muscle actin expression in a rat model. *J Urol* 2008;**180**:388–91.
- [22] Zhuang S, Lu B, Pang M. Postconditioning does not improve renal function or attenuate tubular damage in ischemia/reperfusion-induced acute kidney injury in mice. *The Open Pathol J* 2009;**3**:18–21.
- [23] Weng X, Shen H, Kuang Y, Liu X, Chen Z, Zhu H, et al. Ischemic postconditioning inhibits the renal fibrosis induced by ischemia-reperfusion injury in rats. *Urology* 2012 <http://dx.doi.org/10.1016/j.urology.2012.02.054>.
- [24] Schwartz LM, Lagranha CJ. Ischemic postconditioning during reperfusion activates Akt and ERK without protecting against lethal myocardial ischemia-reperfusion injury in pigs. *Am J Physiol Heart Circ Physiol* 2006;**290**:H1011–8.
- [25] Dow J, Kloner RA. Postconditioning does not reduce myocardial infarct size in an in vivo regional ischemia rodent model. *J Cardiovasc Pharmacol Ther* 2007;**12**:153–63.